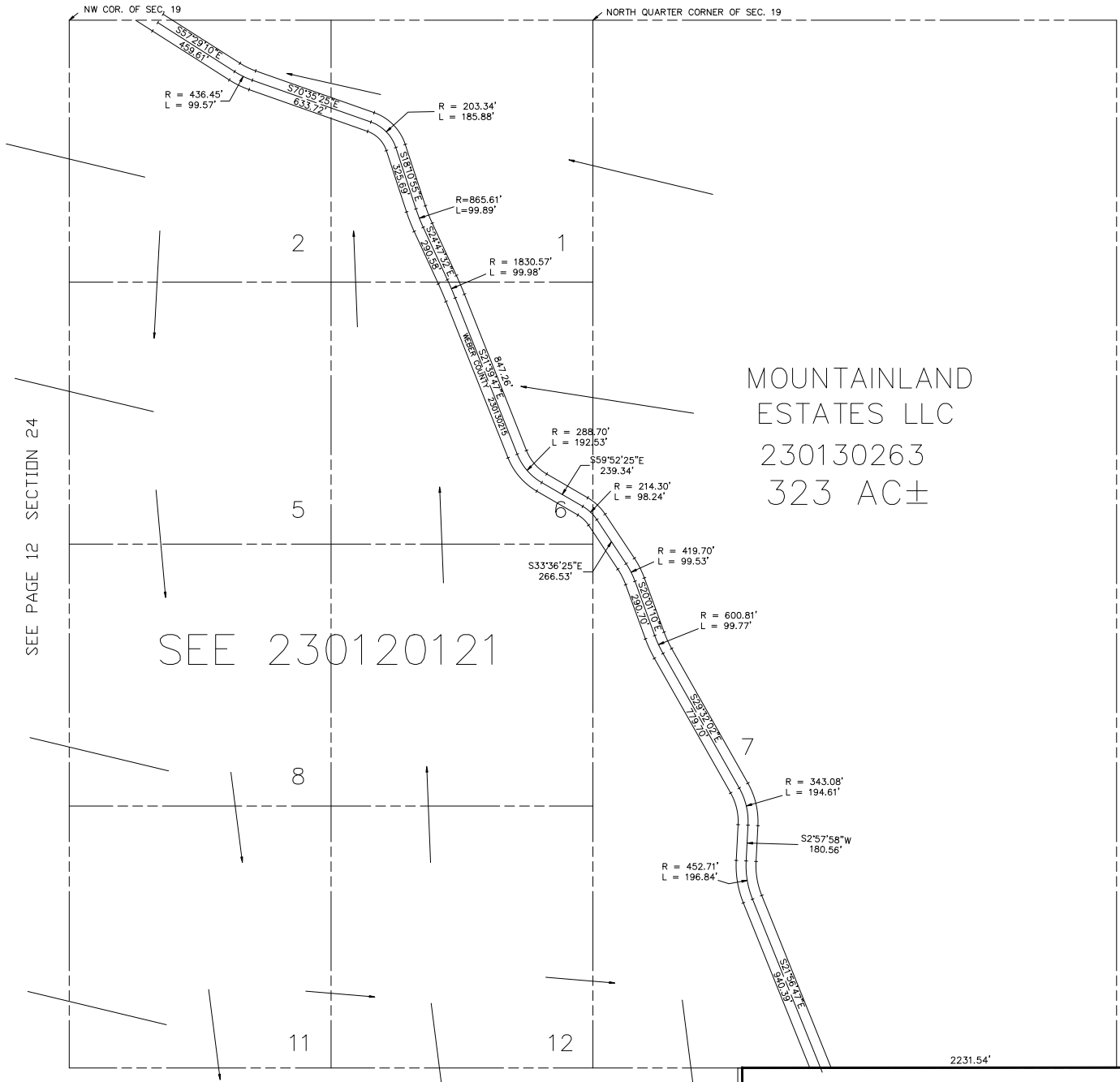


SECTION 19, T.7N., R.3E., S.L.B. & M.

IN WEBER COUNTY  
SCALE 1" = 400'

TAXING UNIT: 58

SEE PAGE 13-6



MOUNTAINLAND  
ESTATES LLC  
230130263  
323 AC±

SEE 230120121

SEE PAGE 12 SECTION 24

SEE PAGE 13

SEE PAGE 18

EVERGREEN PARK SUBDIVISION  
SEE PAGES 22-39